



# **HOW TOWNSHIPS CAN REMAIN CYBER-SECURE, WITH LIMITED FUNDING**

**With Jeff Reiter**





# This Is For You If You Are...

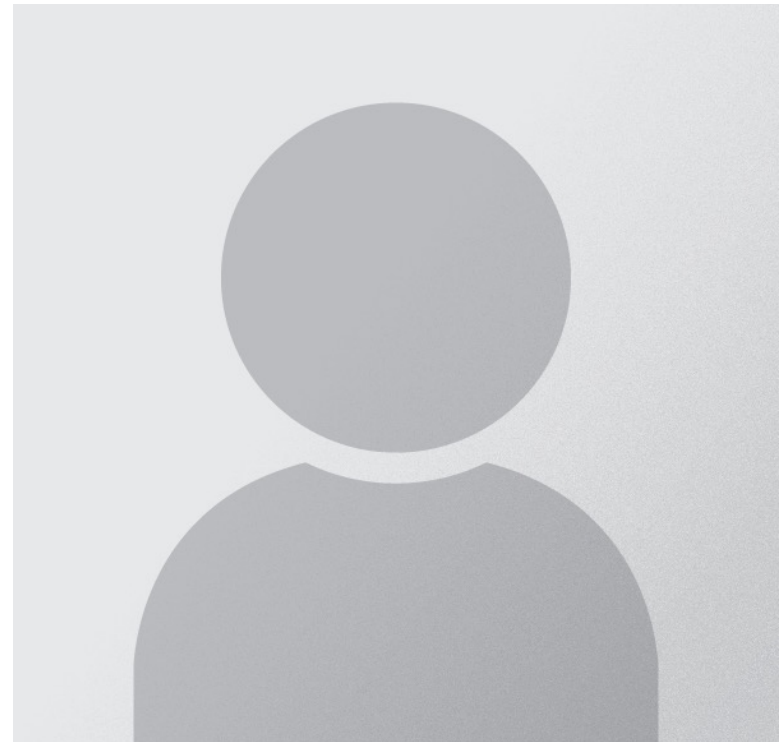
- Elected official or administrator
- Don't want your township's money stolen on your watch
- Need to do the most with your fixed budget





# In The Next 30 Minutes, You'll Discover

- The costliest misconception that is putting your township at risk
- How to determine if you really have risk
- Baseline security for your township and its cost





## Imagine You Could Wave A Magic Wand

- ☑ Your township computers are safe from attack
- ☑ Both staff and elected officials email and data files are safe from attack
- ☑ You are protected from money theft by cyber criminals





# HOW WELL DOES THIS WORK?





# Chief Scott Koerner Says

“RWK understood the needs of a law enforcement agency and the importance of minimizing vulnerabilities. Their previous experience with securing systems that tie into state and federal databases was critical to the modernization of our operations.

The system that we now have in place is reliable, accessible, and secure.”

Scott Koerner, Chief of Police  
Monee IL





# Mike Siemer, Says

*Under RWK's expert guidance, we have successfully upgraded our hardware, software, servers, remote work equipment, communication links, and security measures, making our IT infrastructure resilient and secure.*

*As the President of our firm, I can now sleep well at night knowing that we have a reliable and trustworthy business partner in RWK. They have become an integral part of our operations, and their dedication to our success is truly commendable."*

- Mike Siemer, Managing Partner



**Investing in the Future**



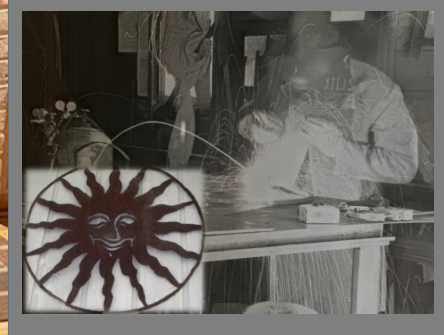


**LET ME TELL  
YOU A LITTLE  
ABOUT  
MYSELF.**



Jeff Reiter, CEO

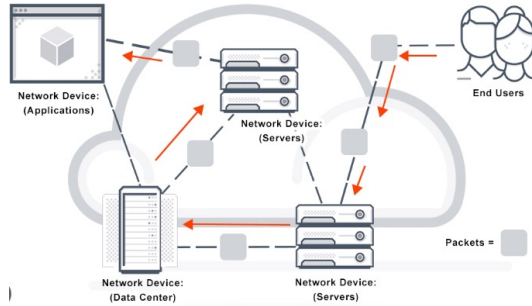
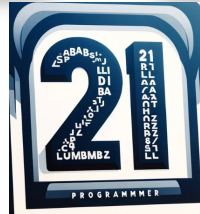








1,750  
Clients Served



3,500  
Users Under Management



ITNATION  
EVOLVE





# Why I'm So Passionate About Helping You

1. I appreciate what you live through in your career as a public servant.
2. I know how hard it is to operate in business, with all you must learn and master.
3. My personal core values: Acceptance, Inquisitiveness, Integrity, Respect .



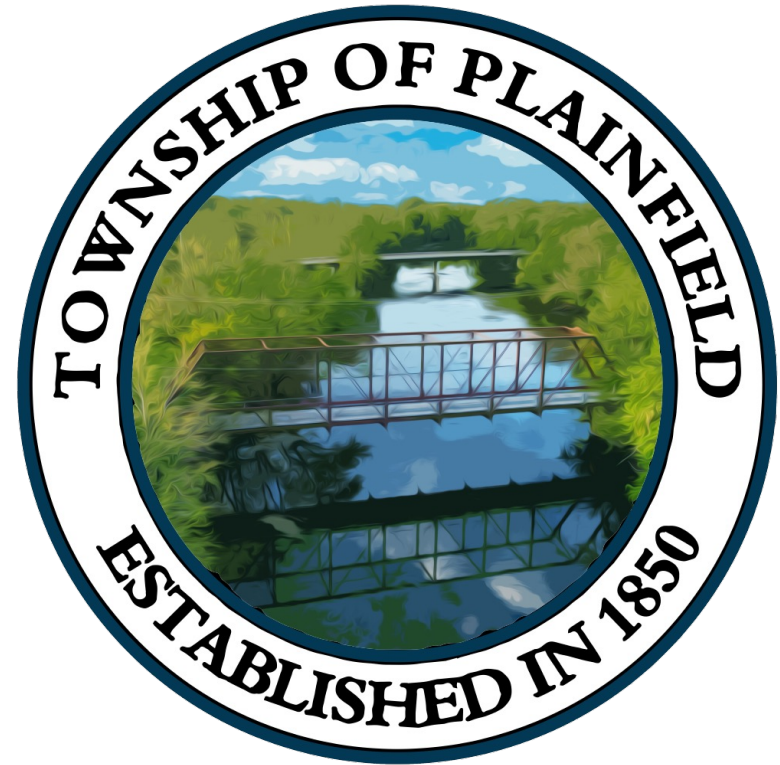
**But The Real Reason I LOVE  
What I Do Is Because Of  
People Like...**





# The Plainfield Township

- Had several email exploits that scared and alarmed them.
- Administrator Willard needed to manage his budget and moved his data to the secure Microsoft cloud, which he was already paying for.
- To maintain compliance for cybersecurity insurance and remain protected, Plainfield adopted recurring security evaluations.





## What Supervisor Al Tinsley Said After Working With Me

“As a career security officer at Exelon, I was frustrated fighting for the security needs of our company balanced with our budget.

With your leadership, I and our board are thankful that you have helped us manage to the risks we had in our email and remote access, and we are excited to appropriate the funding to protect ourselves.”





**But, today isn't about me or  
about my clients, it's about  
YOU...**





...And how YOU can

**Cut through the chatter and hype  
about cybersecurity**

**&**

**Protect your township from the  
devastating effects of financial loss.**





# ARE YOU READY?

GRAB SOMETHING TO WRITE WITH





# Here's What We Will Cover Today...

- You, and everyone at your township, is a target
- All it takes is one click to trigger an event
- Knowing your risk is your best defense



**Let's Get Started With....**





# A Big Misconception Is...

“We have nothing to hide, it is all public record.”

“It won’t happen to me.”

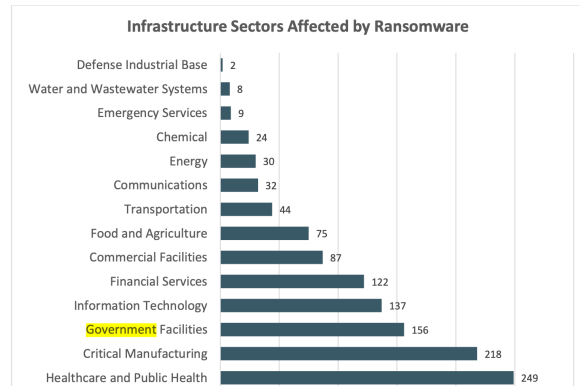
“We can operate without our computers for days”







# A Big Misconception Is...



Government: 3<sup>rd</sup> most likely target





# Here Are The Three Most Important Things You Need To Know

- You have money. Hackers want it.
- All it takes is one click.
- You must act now and know if you are at risk.



**How Important  
Is This**







# City of Wichita Public Services Ransomware Attack, May 3-4

*“I realize that’s frustrating, but I cannot talk about the issues that you want to talk about today while we’re still working through the incident.”*

- City Manager Robert Layton

**Wichita City Hall says it won’t yet release key info on cyber attack, citing security risks**

BY CHANCE SWAIM  
MAY 17, 2024 4:07 PM





**For The Sake Of Time, Let's  
Assume You've Accepted The  
Reality That Your Township is  
a Target...**



**Next Is...**





# All It Takes Is One Click



ComputerHope.com





# A False Belief About This Is...

I have to submit data, don't I?







# But the Truth Is...

- **One click is all it takes**

- Access to all your stored passwords
- Your other computer systems



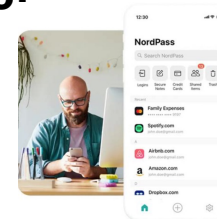
- **You must employ simple, foundational safeguards**

- Multi-factor authentication
- Data backups, properly configured
- Ongoing verification



- **Your computer configurations need to be correct**

- Proper rights and configuration, up to date systems
- Get passwords out of your browsers
- A written documented breach response plan





**How Powerful  
Is This**







# 64 Pen Tests Over 2 Years By RWK 4,975 Pen Tests By Security Team

*“97% of Pen Tests result in actionable items. IT can usually handle 80% of findings.*

*The remaining 20% result in recommendations for improvement in security.”*

- Jeff Reiter, RWK



**GALACTIC ADVISORS**

REPORT  
**Password Report**

CREATED FOR:  
██

03/29/2024

Executive summary

We analyze your information systems as though we were hackers trying to steal your data.

*What can we see? What can we find that's valuable? What flaws can hackers exploit to cripple operations and demand payment for restoration?*

Our recent security assessment has uncovered a critical issue involving cracked passwords, which has put valuable assets at risk. The next sections of this report will delve into the specific assets that are potentially compromised due to this vulnerability. Furthermore, we will outline the extent of the cracked passwords, detailing the methods used and the potential implications for your business. Through this report, we will offer actionable insights and recommendations to address the identified risks and enhance the overall security posture of your digital assets.

**YOUR ANALYSIS SCORECARD:**

- Passwords cracked:** 1099 INSTANCES
- Passwords reused:** 2 SITES
- Passwords compromised:** 122 FOUND

**M365 HIGH RISK ISSUES** Page 2/2

**INCREASED RISK OF ADMINISTRATIVE ACCOUNT COMPROMISE**

The accounts listed in this section are Global Administrators and also appear to be licensed for email access. Using a Global Admin account for email access greatly increases the chances of the account being compromised either through cookie / token theft or through credential phishing.

| ACCOUNT              | GROUP                | LICENSE                  |
|----------------------|----------------------|--------------------------|
| ████████████████████ | Global Administrator | 0365_BUSINESS_ESSENTIALS |

**Remediation:** Do not use Global Admin accounts for day-to-day Microsoft 365 access. Instead create a separate account that you only access when using a browser in private mode. This reduces the chances of having credentials stolen and greatly reduces the ability for an attacker to steal cookies / tokens for this account.



**Now you know why the  
configuration of your systems  
is so important.**



**Next, let's discuss...**





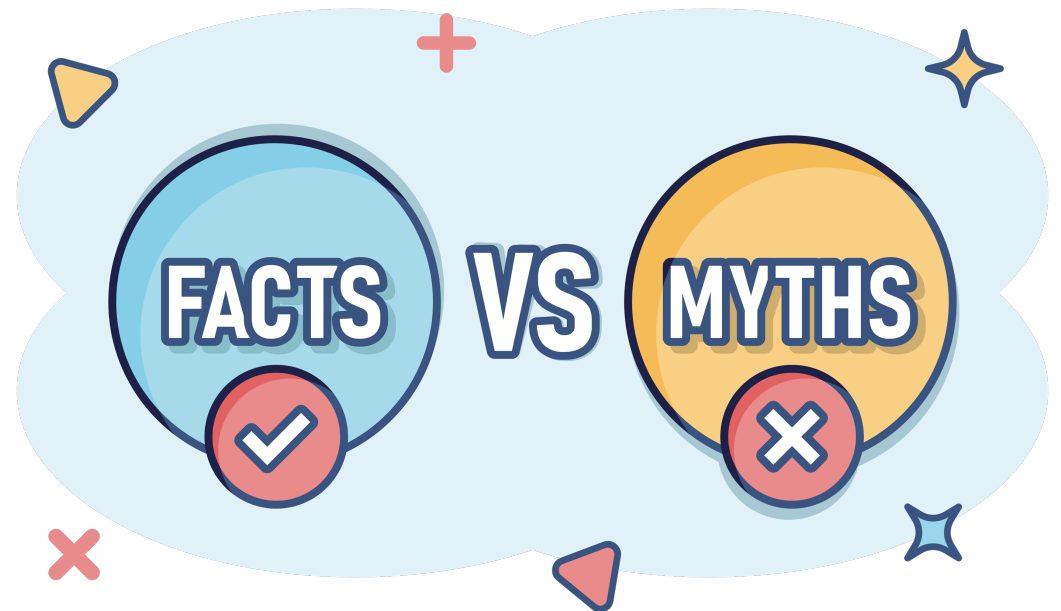
# Knowing Your True Risk: Your Best Defense





# A Myth Surrounding This Is...

My IT says 'we are good'.





## Here Are The 3 Most Important Things You Need To Know About Being 'Good'.

- When asked, 90% of businesses interviewed, say their security is satisfactory. It is not.
- Attesting to controls and procedures on your cyber insurance annual application carries weight.
- The only way to truly know your risk, is to evaluate it.



**What Can This  
Do For You**







# Marco Prete Says

*“Previously, IT issues used to consume a significant amount of our time and resources, causing constant worry and disruptions.*

*However, ever since RWK took over, we no longer fret about IT at all. They identify and handle all the necessary updates, security concerns, and expert recommendations to keep our company running seamlessly, without any worries on our end.”*

- Marco Prete, General Manager





# **So Far You've Discovered ...**

**You don't live under a rock.**

**This will not go away.**

**As a steward of your township you must keep your money safe, or risk becoming the next news story.**



# **And We Talked About**

**You all now know the risk of 1-click.  
Do your staff and colleagues know?**

**You need to have good security  
hygiene and re-test, or risk suffering  
huge financial loss.**



# And You Now Know...

**Rather than throwing a few solutions at your Township technology, you should evaluate your risk so you don't spend **\$\$** on needless protection.**



**But, I Want You To Truly  
Understand This One Thing:**





**You CAN protect your entire township.**

**You do not have to be a victim.**

**While the cyber criminals are getting more and more sophisticated, so are we.**



**To make that happen for you,  
I'm offering you a Pen Test  
and a Risk Evaluation**







# Let Me Tell You Who This Is Not For

If you have done a Pen Test in the last quarter and are actively engaged with a security professional.

If not convinced that cybersecurity is top priority for your township.

If you have no computers.





# Here's How The Risk Assessment Works

- **A Level 1 Risk Assessment:** a 26-minute interview covering procedures and policies in place today
- **A Pen (Penetration) Test** run on 3-5 high value computer assets
- **A readout of findings,** 7 days later



# The Value

Complete network-wide evaluation: \$5,000

## TOI Attendees

Sampling on 3-5 Computers + Level 1 Risk Assessment  
*COMPLIMENTARY BY RWK*





**If you are interested,  
talk to Tim or Nick, in the back  
of the room or during break.**



# Here's What Happens Next...

- We provide you with a non-disclosure agreement
- We schedule and conduct a 26-minute, Level 1 business risk assessment
- We help you run the Pen Test
- You verify that you have scanned 3-5 computers
- We meet with you in 7 days to go through the results





**If Interested, Set a Date to  
Meet with Us**





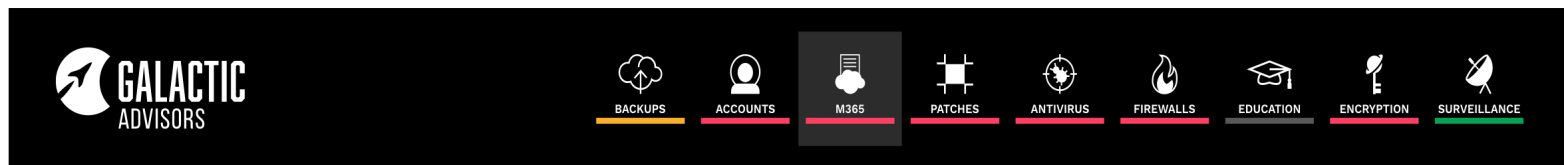
# **BONUSES FOR YOU**

**When you schedule your Level  
1 Risk Assessment**





# Bonus #1: A full report of 9 areas of risk evaluated



- You will receive a full summary report for your Township

**Give this to your IT team to take action.**

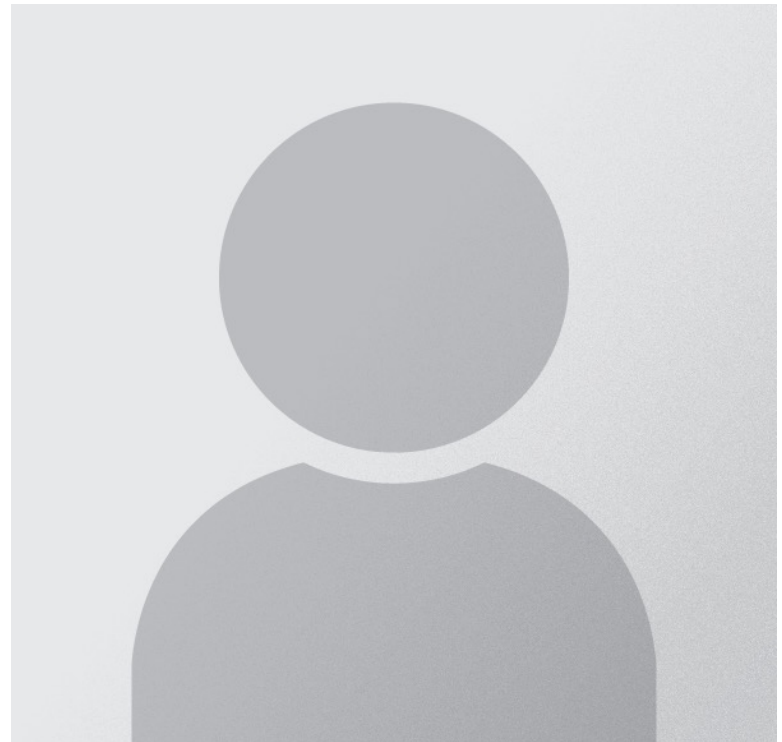
**You can leverage us for knowledge transfer to your IT, so you don't have to speak tech-talk.**





## Bonus #2: Specific Recommendations

- We will give you clear actions to consider.
- We can meet with your IT to conduct knowledge transfer





**ARE YOU READY FOR THE  
TRUTH ABOUT YOUR  
COMPUTER SYSTEMS?**





# One More Bonus Tip For Today

<https://signal.org>

- Text messaging is not secure and read by thousands of computers around the globe
- Signal is Public domain, free
- Works on Windows or Mac and Apple or Android
- Must be used by both parties

## Why use Signal?

Explore below to see why Signal is a simple, powerful, and secure messenger



# Let's Review!

- You, and everyone at your township, is a target
- All it takes is one click to trigger an event
- An evaluation of your technology is your best defense





# Common Question #1

‘You’ve scared the heck out of me. Now what?’

Leverage this knowledge transfer.

Conduct an initial, free, sample evaluation. Then determine if you need to take more action.



# Common Question #2

We had an evaluation done last year. Do we need to repeat this again or are we ok?

Quarterly is best.

Annually is the minimum.

*Because our world changes.*





# Common Question #3

Are there any grants or free programs available to us right now?

**Yes!** The Illinois Cyber Navigator Program is accepting applications for Endpoint Detect and Respond technology. RWK can help you with this.





# THANK YOU



RWK IT Services 9645 Lincoln-Way Lane, Suite 101 [www.rwksolvesit.com](http://www.rwksolvesit.com)

| Complete Managed IT Service                       | Managed Security Service                                   | Data Backup Management  | Security Officer Service (vCSO)              | Cloud Services Management             |
|---|--|---|--|---------------------------------------|
| Help Desk, Onsite, Remote, 24x7 Service & Support | Simulated Phishing, Security Training, Identity Monitoring | Servers, Critical PCs   | Recurring Penetration (PEN) Testing          | Cloud Storage (OneDrive Libraries)    |
| Network & Computer Management                     | Password Security Vault                                    |  | Risk Assessment                              | Cloud Printing                        |
| Data Backup Protection Management                 | Active Detection & Response to a Threat                    | Microsoft 365 Email   | Administrative, Physical Controls Management | Cloud Phone/Voice Service             |
| Microsoft 365 Management                          | Prevention of Threat Execution                             | Microsoft 365 Cloud File System   | Data Loss Prevention, Data Management        | Cloud Computing Platform (Azure, AWS) |

9645 Lincolnway Ln., Suite 101 Frankfort, IL 60423  
 815-518-6429 or 708-304-1969  
[www.RWKsolvesIT.com](http://www.RWKsolvesIT.com)